

Welcome Leadership Skills and Methods

in a
Coordinated Community
Response to
Domestic Violence



Rose Thelen

[1]

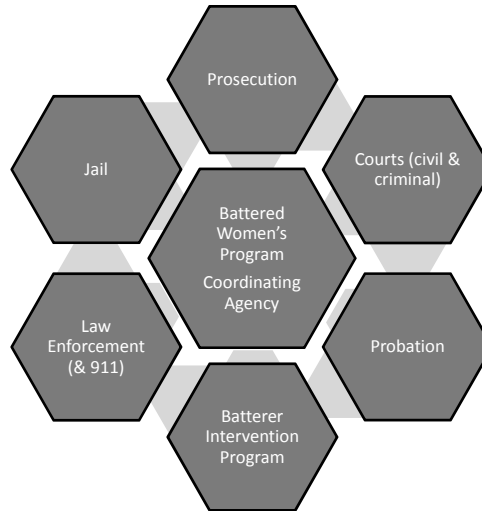
Coordinated Community Response (CCR)

An interagency effort to change the climate of tolerance of battering by institutionalizing practices which centralize victim safety and offender accountability in domestic assault-related cases.

[2]

Coordinated Community Response (Criminal/Tribal/Civil Justice System)

Sharing information,
creating policy together
to maximize victim safety
& offender accountability

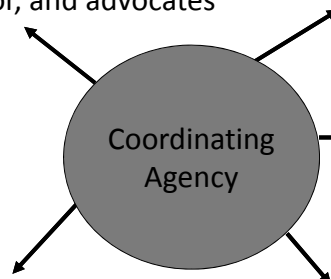


{ 3 }

Meeting Structure

Bi-monthly meetings
with probation, CCR
Coordinator, and advocates

Quarterly
interagency
meetings



Ad hoc committees
on special issues

Problem-solving
sessions with one or
more agencies

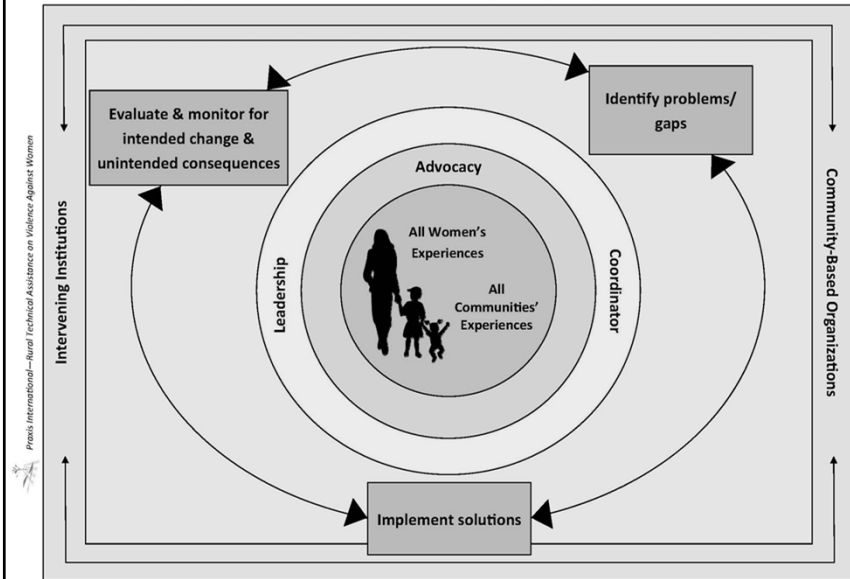
Monthly advocate
meetings

{ 4 }

Effective CCRs

- Written practice changes: intra- & inter-agency
- Central role for victims & advocates
- Tracking / monitoring / assessing activities
- Interagency dialogue & problem-solving
- Attention to risk, context, & severity
- Shared philosophy
- Reduce unintended consequences & disparate impact

The Work of Coordinating Interagency Responses to Violence Against Women



Identifying Gaps

Methods

- Document women's experience
- Analyze texts
- Talk with / observe practitioners
- Track / analyze public data
- Utilize state, tribal, & national resources
- Identify models & best practices

[7]

Build Solutions into Case Processing

Best Practices

Best Processes

[8]

Assess/evaluate

Tracking / monitoring

Text analysis

Ongoing victim engagement

{ 9 }

Problematic institutional responses

No linkage to provide advocate-initiated response

Few arrests of batterers / many arrests of battered women

High dismissal / low prosecution rates / victim dependent prosecution

No statistical data on law enforcement, court outcomes

Policy, protocol, procedure insufficiencies

Women charged for failure to "cooperate"

Protection orders not enforced

Battered women losing children in child protection / divorce, denied housing, charged for protection orders

What about your community?

{ 10 }

Best Practices

Advocacy-initiated response

Risk assessment law enforcement & multi-agency

DAIN tracking & monitoring database

Predominant aggressor / self-defense assessments

Report-writing guidelines

Blueprint for Safety

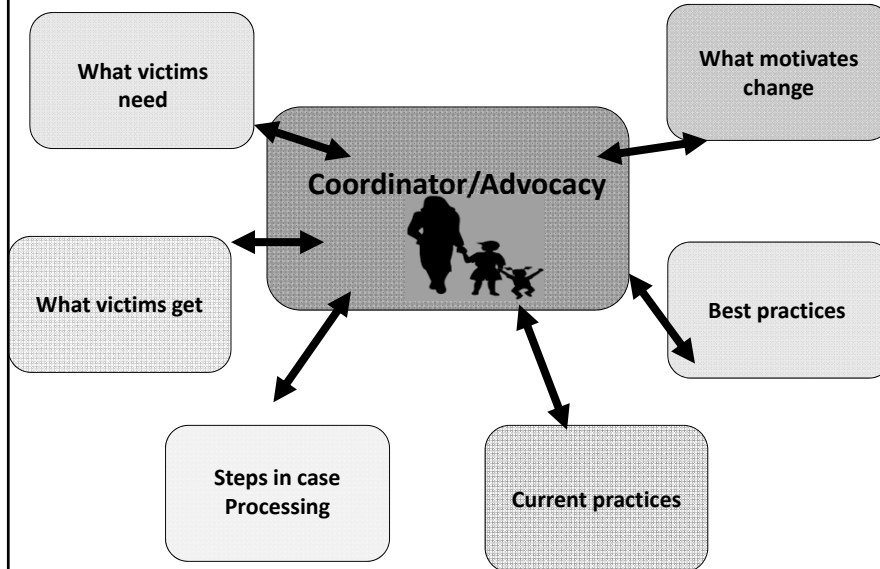
{ 11 }

The Role of the Coordinator

- Identify, document, analyze, consult regarding response problems
- Identify best practices / processes to fix response problems
- Incorporate best practices into written policy, protocols, procedures
- Monitor, evaluate, assess practice changes
- Document and address deviations of policy
- Track all cases through the system/ produce reports
- Secure agreements for information sharing
- Coordinate interagency meetings, ad hoc committee meetings, other groups to institutionalize best practices/ processes
- Coordinate information sharing
- Invite feedback on the work being done/evaluate CCR
- Promote community support
- Other

{ 12 }

Know the System



(13)

Role of CCR Coordinator

- Advocate
- Coordinator
- Researcher
- Leader
- Community Organizer
- Negotiator
- Monitor

(14)