

**Supporting Safety Together:**  
*Assessing Child Protective Services Response to the Co-Occurrence of Child Maltreatment and Battering*  
 February 7, 2017  
 2 – 3:15 pm Central

**We'll begin shortly.**

- Audio connection is by VoiceoverIP on your computer or by phone: **1-800-832-0736** and using room number **\*1126783#**.
- If using VoIP make sure your speaker/headset volume is on
- If audio quality is poor, dial in by phone and once connected, turn your speakers off.
- Phone lines are muted.

Praxis International - Institutional Analysis Technical Assistance

---

---

---

---

---

---

---

---

**Supporting Safety Together:**  
*Assessing Child Protective Services Response to the Co-Occurrence of Child Maltreatment and Battering*



**Praxis International Webinar February 2, 2017**

---

---

---

---

---

---

---

---

**Webinar tips**

- **Making comments**
  - Audio only: email comments to [liz@praxisinternational.org](mailto:liz@praxisinternational.org)
  - Via webinar: add questions/comments to the Q&A box. They will be routed to today's presenters and will be responded to in the presentation.
- **Dealing with lost connections**
  - Lost webinar connection: re-join with original link from email or email [liz@praxisinternational.org](mailto:liz@praxisinternational.org)
  - Lost phone connection: dial back in, using cell phone if needed after multiple attempts: **1-800-832-0736 code \*1126783#**.
- **Logistics**
  - Adjust Q&A display box to your preference
  - The Materials and Weblinks boxes provide access to the PowerPoint and other helpful resources

Praxis International - Institutional Analysis Technical Assistance

---

---

---

---

---

---

---

---

## Supporting Safety Together

Assessing Child Protective Services Response  
to the Co-Occurrence of Child Maltreatment and Battering  
With

Jessica Nelson, Wright County Health & Human Services-CPS

Rose Thelen, Gender Violence Institute

Maren Woods, Praxis Program Manager

*This project is supported by Grant #2015-TA-AX-K056 awarded by the Office on Violence Against Women, U.S. Department of Justice. The opinions, findings, conclusions and recommendations expressed here are those of the presenter(s) and do not necessarily reflect the views of the U.S. Department of Justice.*

Praxis International - Institutional Analysis Technical Assistance

---

---

---

---

---

---

---

---

Children are at great risk of  
physical harm when living  
in homes with batterers

Straus, M.A. & Gelles, R.J. (1990). Physical  
violence in American families. New  
Brunswick, NJ: Transaction Publishers.



Praxis International - Institutional Analysis Technical Assistance

---

---

---

---

---

---

---

---

A large number of severe  
and fatal injuries to  
children occur where there  
is battering

Oregon Department of Human Resources,  
1990, MA Department of Social Services,  
1993.



Praxis International - Institutional Analysis Technical Assistance

---

---

---

---

---

---

---

---

Children are harmed emotionally, as well as physically, by batterers

Edleson, J.L. (1999). Children's witnessing of adult domestic violence. *Journal of Interpersonal Violence, 14* (8).



Praxis International - Institutional Analysis Technical Assistance

---

---

---

---

---

---

---

---

Safer together

Keeping battered mothers safe increases the safety of her children



Praxis International - Institutional Analysis Technical Assistance

---

---

---

---

---

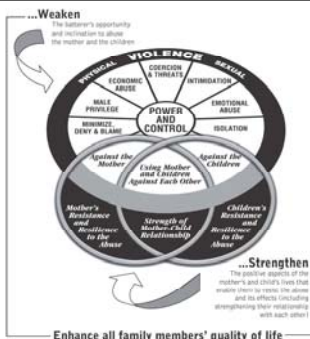
---

---

---

Successful Interventions in Cases of Battering that Involve Children...

Adapted by Praxis International with permission from Domestic Abuse Intervention Programs, Duluth, MN



Praxis International - Institutional Analysis Technical Assistance

---

---

---

---

---

---

---

---

### Gaps in Child Protective Services for Battered Mothers

- Pressure on battered mothers to stop the violence
- Reliant on separation as primary safety strategy
- Mandating extensive list of services for battered mothers
- Lack of ability to control the offender/hold the batterer accountable
- Services do not match the needs
- "Failure to protect"
- What else?

Praxis International - Institutional Analysis Technical Assistance

---

---

---

---

---

---

---

---

### Advocacy efforts to close gaps

Praxis International - Institutional Analysis Technical Assistance

---

---

---

---

---

---

---

---

### Nicholson v. Williams

Nicholson v. Williams, Case # 00-CV2229, U.S. District Court, Eastern District, summary of expert Testimony on the Impact of Domestic Violence on Children b. Effects of Removals on Children, Ex. 139 at 5.

*Taking a child whose greatest fear is separation from his or her mother and in the name of 'protecting' that child [by] forcing on them, what is in effect, their worst nightmare, is tantamount to pouring salt on an open wound.*

– Dr. David Pelcovitz

Praxis International - Institutional Analysis Technical Assistance

---

---

---

---

---

---

---

---

### National Efforts to Improve Outcomes

- *Effective Intervention in Domestic Violence and Child Maltreatment Cases: Guidelines for Policy and Practice*
  - Greenbook Principles
  - Greenbook Demonstration Initiative
- David Mandel & Associates, Safe & Together Model ©
- Center for the Study of Social Policy: Child Welfare focused Institutional Analysis
- Safety and Accountability Audits of child protective services and child welfare response to cases involving battering

Praxis International - Institutional Analysis Technical Assistance

---

---

---

---

---

---

---

---

### Supporting the Safety of Battered Mothers and Their Children Together

*Another Praxis International Tool for Change-Oriented Advocacy:*  
Supporting survivors' efforts to secure safety, recovery, rights, and autonomy while also working to reform the social institutions, public policy, and community norms that support battering and other forms of violence against women

Praxis International - Institutional Analysis Technical Assistance

---

---

---

---

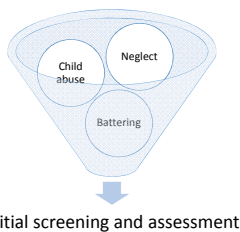
---

---

---

---

### Scope of the practice assessment guide



Praxis International - Institutional Analysis Technical Assistance

---

---

---

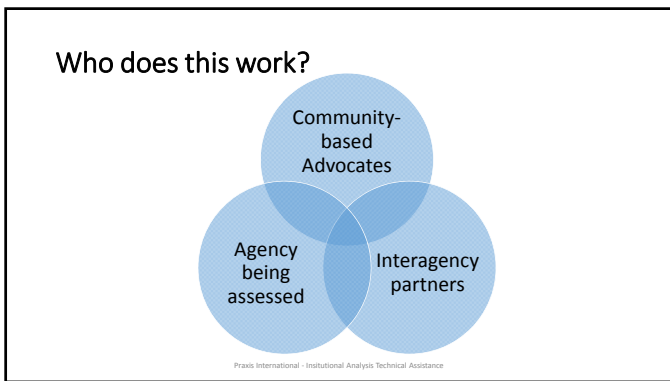
---

---

---

---

---



---

---

---

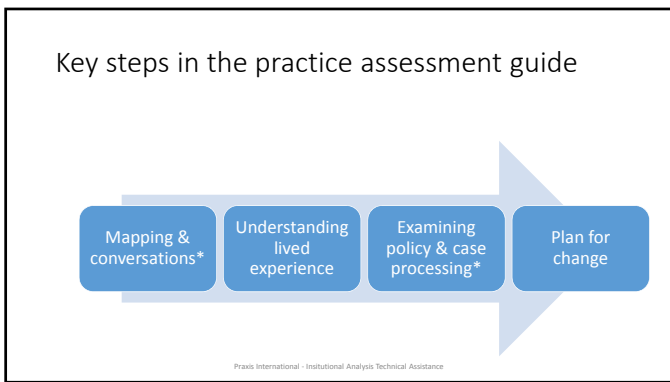
---

---

---

---

---



---

---

---

---

---

---

---

---

### What is Safety?

Shared Discussion Series

- Safety for Children**
- Safety for Victims of Battering**
- Safety for Mothers and Children**

Praxis International - Institutional Analysis Technical Assistance

---

---

---

---

---

---

---

---

Analyzing policies, forms, checklists, case files

Praxis International - Institutional Analysis Technical Assistance

---

---

---

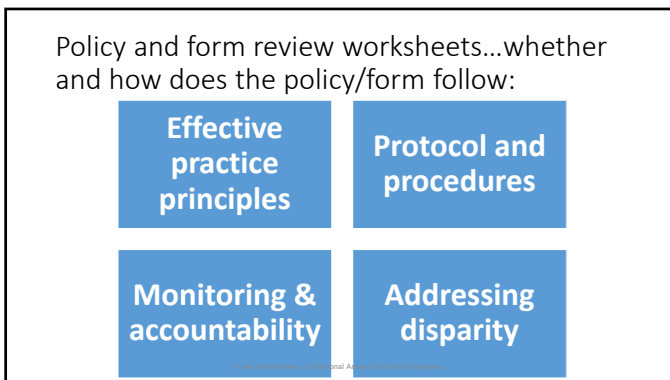
---

---

---

---

---




---

---

---

---

---

---

---

---

Family Assessment Response Protocol Checklist (local, internal policy)

Case Name: \_\_\_\_\_  
Child(ren): \_\_\_\_\_

**Family Assessment Response Protocol Checklist**

Date _____	1. Maltreatment report received (Mandated Reporter <input type="checkbox"/> YES <input type="checkbox"/> NO)
_____	2. Maltreatment report screened with Team and inserts Family Assessment criteria
_____	3. Data report assigned for assessment. Issue will assign and will immediately notify the appropriate law enforcement agency via fax.
_____	4. Data report received assessment.
_____	5. Notify mandated reporter of agency decision to provide Family Assessment within 10 days of maltreatment report (DHS will send 9333 letter).
_____	6. Phone contact (or mail if no phone) initiated with parent(s) within 72 hours to explain agency's need to respond with either the Traditional CPS approach, or the Family Assessment program and schedule a face-to-face appointment with the family.
_____	7. Meet with family. Do safety assessment (do not print): <input type="checkbox"/> identified adult within 9 calendar days <input type="checkbox"/> primary caregiver (within 3 calendar days) <input type="checkbox"/> other children in family <input type="checkbox"/> other parent or parents <input type="checkbox"/> other caregivers living in household <input type="checkbox"/> alleged offender
_____	8. Complete: _____ Application for Social Services (SSS 966) _____ Notice of Privacy Practices (pg 10 and cover) (DHP-44) _____ Identification of Cultural Needs (sent Native to Tribe DHS 5237 if appropriate) _____ Family Safety Plan _____ written _____ SSSN _____ Family Assessment Brochure given (DHS 4542) _____ Consent Child and Team Checklist _____ Consent for Release of Information
_____	9. Substance use and domestic violence screened (see parents separate if concerns)
_____	10. Complete assessment visit or video written or print (do not print)
_____	11. Complete the assessment within 45 days
_____	12. Notify MR that assessment was completed & if opened for services (DHS letter).
_____	13. Notify parent of assessment outcome and whether there is a need for services, verbally with family at time of interview if possible and in writing (DHS letter), verbally with family at time of interview if possible and in writing (DHS letter).

Praxis International - Institutional Analysis Technical Assistance

---

---

---

---

---

---

---

---

### Family Safety Plan

- These are the things that make us feel unsafe, worried, or afraid:
- This is what our family is doing already to make sure we stay safe (the good things we do for ourselves and each other):
- This is our plan to deal with the things we are worried about (who, what, when, where, how):
- These are the warning signs that we need to use our safety plan:
- If our first safety plan doesn't work, we will try this:
- I am signing this safety plan because I want my family to be safe. I agree to follow this safety plan if needed:

Praxis International - Institutional Analysis Technical Assistance

---

---

---

---

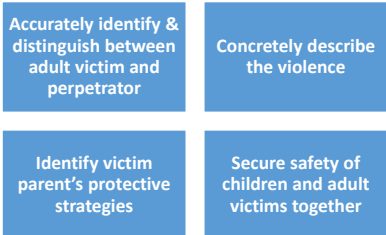
---

---

---

---

### Case file review worksheets...whether and how does the case file:



Praxis International - Institutional Analysis Technical Assistance

---

---

---

---

---

---

---

---

### Case notes

	Police report of incident	CPS intake notes	Revised CPS intake notes
Case 1	An anonymous complainant stated that a female was being hit and was then drug inside the residence...I observed minor injuries to Victim. Victim was very reluctant to speak about anything due to Suspect's criminal past [two prior felony domestic assault convictions within 10 years].	It was reported that child was present during domestic between mother and father.	Child present and observed father hit mother and drag her inside the house. Mother reluctant to speak about anything due to Suspect's criminal past [two prior felony domestic assault convictions within 10 years].
Case 2	Victim told me: Suspect was being mean and punched me 6 times in the right knee. I was seated on the recliner in the living room and it tipped back as I was being punched. My son stood up for me and told Suspect not to hit me and Suspect hit my son in the leg.	It was reported that Child was punched in the knee while intervening a fight between his parents.	Boyfriend punched mother in knee 6 times in front of child. Child intervened and boyfriend punched child in the leg.

Praxis International - Institutional Analysis Technical Assistance

---

---

---

---

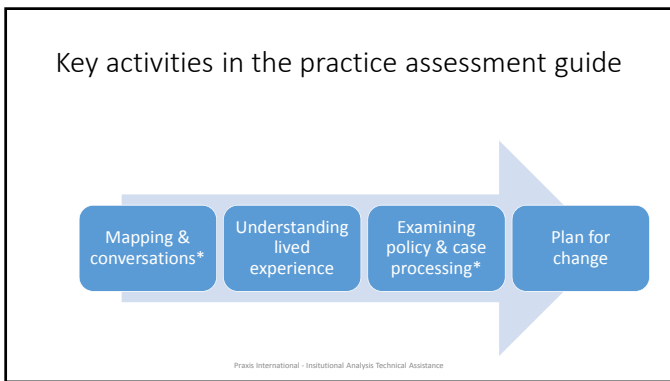
---

---

---

---






---

---

---

---

---

---

---

---

### Wright County Outcomes

*See report on Praxis website for more detail*

- Improved relationships and better communication
- Use of a new language and approach to seeking systemic change
- Lethality assessment from law enforcement reports now sent child protection
- Revised and new procedures for child protection workers
- Strengthening linkages with other agencies, e.g., Probation
- Use of specific language to describe battering in ways that hold the batterer accountable
- New position for a child protection worker with specific focus on cases involving domestic violence

Praxis International - Institutional Analysis Technical Assistance

---

---

---

---

---

---

---

---

### Community readiness

<p><b>Relationship status</b></p> <ul style="list-style-type: none"> <li>• Strangers?</li> <li>• Antagonistic?</li> <li>• New?</li> <li>• Can talk to each other</li> <li>• Common understanding</li> <li>• Shared commitment &amp; problem-solving</li> </ul>	<p><b>Coordination and facilitation</b></p> <ul style="list-style-type: none"> <li>• Access to policies, forms, and case files</li> <li>• Inside or outside facilitator</li> <li>• Funding</li> <li>• Partnering agencies               <ul style="list-style-type: none"> <li>• Police</li> <li>• Probation</li> <li>• Culturally specific programs</li> <li>• Others</li> </ul> </li> </ul>
--	---

Praxis International - Institutional Analysis Technical Assistance

---

---

---

---

---

---

---

---

### Commitment

- Openness and willingness to learn from each other and change
- Non-defensive and non-accusatory approach
- Stay focused on enhancing safety and well-being
- Coordinator and admin support
  - Gather documents
  - Document duplication and assembly
- But mostly time of a few CPS staff, a few advocates, and any other agency practitioners
  - Could range from 4 months to a year
  - Coordinator = 216 hours (roughly)
  - Team member = 80 hours (roughly)

Praxis International - Institutional Analysis Technical Assistance

---

---

---

---

---

---

---

---

### OVW solicitations are now open!

<https://www.justice.gov/ovw/open-solicitations>

#### Supportive materials and resources

- Sample grant language
- Guides, checklists, templates
- Focus group materials
- Impact and promotional material
- Training videos & webinar archives
- Individual support: Call us!  
651-699-8000, x10

#### For

- Child Protective Services Practice Assessment
- Safety & Accountability Audits
- Domestic Violence Best Practice Assessment
- Blueprint for Safety

Praxis International - Institutional Analysis Technical Assistance

---

---

---

---

---

---

---

---

### Upcoming training events

- May 2-5, 2017 Community Assessment Institute, St. Paul
- Mar 7 webinar on how to use these tools to reduce unintended consequences and disparate impact

Praxis International - Institutional Analysis Technical Assistance

---

---

---

---

---

---

---

---

Thank you!

praxisinternational.org

651-699-8000, x10

[safetyaudit@praxisinternational.org](mailto:safetyaudit@praxisinternational.org)

This project is supported by Grant #2015-TA-AX-K056 awarded by the Office on Violence Against Women, U.S. Department of Justice. The opinions, findings, conclusions and recommendations expressed here are those of the presenter(s) and do not necessarily reflect the views of the U.S. Department of Justice.

---

---

---

---

---

---

---

---