

We will begin shortly.
While you wait...

**The Domestic Violence
Best Practice
Assessment Guide:**

An Introduction
with

Maren Woods, Program Manager

Audio connection is by VoiceoverIP (VoIP) on your computer or by phone: **1-800-832-0736** room number ***1126783#**.

- If using VoIP make sure your speaker/headset volume is on
- If audio quality is poor, dial in by phone and once connected, turn your speakers off.

PRAXIS INTERNATIONAL - TECHNICAL ASSISTANCE ON ANALYZING INSTITUTIONAL RESPONSES TO VIOLENCE AGAINST WOMEN

Webinar tips

Making comments

- If using audio only, email comments to liz@praxisinternational.org
- If using computer, send questions/comments by private chat to webinar hosts, Alicia or Patricia, at NCJFCJ. They will share your thoughts with the presenters.

Dealing with lost connections

- Lost webinar connection: re-join with original link from email or email liz@praxisinternational.org
- Lost phone connection: dial back in, using cell phone if needed after multiple attempts.

2

Assessing for Core Practices in Criminal Justice System Response to Domestic Violence

USING THE BEST PRACTICE ASSESSMENT GUIDES TO ENHANCE 911 & PATROL RESPONSE

This project is supported by Grant #2015-TA-AX-K056 awarded by the Office on Violence Against Women, U.S. Department of Justice. The opinions, findings, conclusions and recommendations expressed here are those of the author(s) and do not necessarily reflect the views of the U.S. Department of Justice.

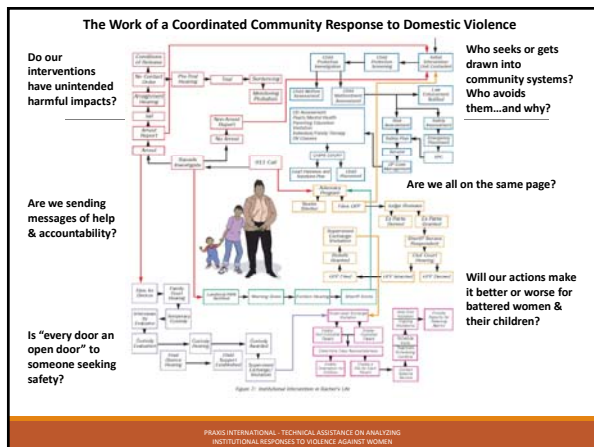
PRAXIS INTERNATIONAL - TECHNICAL ASSISTANCE ON ANALYZING INSTITUTIONAL RESPONSES TO VIOLENCE AGAINST WOMEN

Today's guests

Katie Nash
Billings Police Department
Billings, Montana

Courtney Chasse
Hope & Justice Project
Presque Isle, ME

PRAXIS INTERNATIONAL - TECHNICAL ASSISTANCE ON ANALYZING INSTITUTIONAL RESPONSES TO VIOLENCE AGAINST WOMEN



Methods of Constructive Engagement for Institutional Reform

Safety & Accountability Audit	Practice Assessment	Blueprint for Safety	Distinctive Applications
<ul style="list-style-type: none"> Broad, open analysis and discovery regarding the criminal & civil legal system's response to violence against women 	<ul style="list-style-type: none"> Focused analysis on checklists of best practices 	<ul style="list-style-type: none"> Comprehensive assessment of criminal legal system's response to battering that results in adoption of model policies 	<ul style="list-style-type: none"> Broad, open analysis in settings such as foster care, human service organizations,

PRAXIS INTERNATIONAL - TECHNICAL ASSISTANCE ON ANALYZING INSTITUTIONAL RESPONSES TO VIOLENCE AGAINST WOMEN

The Domestic Violence Best Practice Assessment Guides

AN INTRODUCTION

PRAXIS INTERNATIONAL - TECHNICAL ASSISTANCE ON ANALYZING INSTITUTIONAL RESPONSES TO VIOLENCE AGAINST WOMEN

Making the connections...

Are we centralizing & strengthening safety for victims?

Coordinated Community Response

Do our efforts enhance or diminish offender accountability?

Best Practice Assessment

PRAXIS INTERNATIONAL - TECHNICAL ASSISTANCE ON ANALYZING INSTITUTIONAL RESPONSES TO VIOLENCE AGAINST WOMEN

What do we mean by “Best Practice”?

Lessons from 70+ communities’ analysis of responses to battering


Research of outcomes in criminal justice intervention for women and children

Lesson: Complex systems not designed to account for battering + Coordinate & organize work to account for battering = Enhanced safety & accountability

PRAXIS INTERNATIONAL - TECHNICAL ASSISTANCE ON ANALYZING INSTITUTIONAL RESPONSES TO VIOLENCE AGAINST WOMEN

Domestic Violence Best Practice Assessment Guides

A set of tools for a small, interdisciplinary group to review response to domestic violence-related cases in four key areas of criminal legal system intervention:



```
graph LR; A[911] --> B[Patrol]; B --> C[Investigation]; C --> D[Charging]
```

PRAXIS INTERNATIONAL - TECHNICAL ASSISTANCE ON ANALYZING INSTITUTIONAL RESPONSES TO VIOLENCE AGAINST WOMEN

Key Steps in the Best Practice Assessment Process

Step 1: Organize & Prepare	Step 2: Map & Analyze case processing	Step 3: Findings & Reccs
<ul style="list-style-type: none">• Coordinator• Select the team• Structure & timeline• Gather policies & case files for review	<ul style="list-style-type: none">• Mapping• Analyze case files• Analyze policies	<ul style="list-style-type: none">• Identify common themes & key findings• Develop recommendations for change• Construct a plan for change

PRAXIS INTERNATIONAL - TECHNICAL ASSISTANCE ON ANALYZING INSTITUTIONAL RESPONSES TO VIOLENCE AGAINST WOMEN

Features of Best Practice Assessment

- A specific focus
- Conducted by a small, interagency team
- Checklists of core practices
- Practitioner-advocate partnership

PRAXIS INTERNATIONAL - TECHNICAL ASSISTANCE ON ANALYZING INSTITUTIONAL RESPONSES TO VIOLENCE AGAINST WOMEN

Experiences of two communities

Katie Nash
Billings Police Department
Billings, Montana

Courtney Chasse
Hope & Justice Project
Presque Isle, ME



PRAXIS INTERNATIONAL - TECHNICAL ASSISTANCE ON ANALYZING INSTITUTIONAL RESPONSES TO VIOLENCE AGAINST WOMEN

What made you decide to conduct a Domestic Violence Best Practice Assessment?

PRAXIS INTERNATIONAL - TECHNICAL ASSISTANCE ON ANALYZING INSTITUTIONAL RESPONSES TO VIOLENCE AGAINST WOMEN

How did you select your team?

PRAXIS INTERNATIONAL - TECHNICAL ASSISTANCE ON ANALYZING INSTITUTIONAL RESPONSES TO VIOLENCE AGAINST WOMEN

Examples of Team Members

Scope	Suggested Team Members
911	<ul style="list-style-type: none">• One or more 911 call takers and dispatchers• Patrol officer(s)• Community advocate• Coordinator
911 & Police Patrol	<ul style="list-style-type: none">• 911 call taker or dispatcher• One or more patrol officers• Police investigator• Prosecutor• Community advocate• Coordinator

PRAXIS INTERNATIONAL - TECHNICAL ASSISTANCE ON ANALYZING INSTITUTIONAL RESPONSES TO VIOLENCE AGAINST WOMEN

How did you get buy-in?

PRAXIS INTERNATIONAL - TECHNICAL ASSISTANCE ON ANALYZING INSTITUTIONAL RESPONSES TO VIOLENCE AGAINST WOMEN

Questions?

PRAXIS INTERNATIONAL - TECHNICAL ASSISTANCE ON ANALYZING INSTITUTIONAL RESPONSES TO VIOLENCE AGAINST WOMEN

What did you find out
& what did you do
about it?

PRAXIS INTERNATIONAL - TECHNICAL ASSISTANCE ON ANALYZING INSTITUTIONAL RESPONSES TO VIOLENCE AGAINST WOMEN

Did you have to adapt
the process? How?

PRAXIS INTERNATIONAL - TECHNICAL ASSISTANCE ON ANALYZING INSTITUTIONAL RESPONSES TO VIOLENCE AGAINST WOMEN

Any advice?

PRAXIS INTERNATIONAL - TECHNICAL ASSISTANCE ON ANALYZING INSTITUTIONAL RESPONSES TO VIOLENCE AGAINST WOMEN

Questions?

PRAXIS INTERNATIONAL - TECHNICAL ASSISTANCE ON ANALYZING INSTITUTIONAL RESPONSES TO VIOLENCE AGAINST WOMEN

Support for Domestic Violence Best Practice Assessments

<p><small>OVW GRANT SOLICITATIONS</small></p> <ul style="list-style-type: none"> <input type="checkbox"/> Rural Grant Program <input type="checkbox"/> Grants to Encourage Arrest Program 	<p><small>TRAINING & TECHNICAL ASSISTANCE</small></p> <ul style="list-style-type: none"> <input type="checkbox"/> Save the Dates! May 2-5, 2017 Community Assessment Institute, St. Paul, MN <input type="checkbox"/> www.praxisinternational.org <input type="checkbox"/> Free download of DVBPA Guides
---	--

<http://praxisinternational.org/institutional-analysiscommunity-assessment-2/best-practice-assessment-guides/>

PRAXIS INTERNATIONAL - TECHNICAL ASSISTANCE ON ANALYZING INSTITUTIONAL RESPONSES TO VIOLENCE AGAINST WOMEN

Thank You

For questions, assistance, or more information, please contact:

Maren Woods, Program Manager
Praxis International, Inc.
Maren@praxisinternational.org
(651) 699-8000, ext. 10

PRAXIS INTERNATIONAL - TECHNICAL ASSISTANCE ON ANALYZING INSTITUTIONAL RESPONSES TO VIOLENCE AGAINST WOMEN
