

**Need to Re-Invigorate Your Coordinated  
Community Response to Violence Against Women?**  
*An Introduction to Praxis' Methods of Constructive  
Engagement for Institutional Reform*



Praxis International Webinar January 17, 2017

---

---

---

---

---

---

---

---

**Webinar tips**

- **Making comments**
  - Audio only: email comments to [liz@praxisinternational.org](mailto:liz@praxisinternational.org)
  - Via webinar: add questions/comments to the Q&A box. They will be routed to today's presenters and will be responded to in the presentation.
- **Dealing with lost connections**
  - Lost webinar connection: re-join with original link from email or email [liz@praxisinternational.org](mailto:liz@praxisinternational.org)
  - Lost phone connection: dial back in, using cell phone if needed after multiple attempts: **1-800-832-0736 code \*1126783#**.
- **Logistics**
  - Adjust Q&A display box to your preference
  - The Materials and Weblinks boxes provide access to the PowerPoint and other helpful resources

---

---

---

---

---

---

---

---

**Need to Re-Invigorate Your  
Coordinated Community Response to  
Violence Against Women?**

*An Introduction to Praxis' Methods of Constructive Engagement  
for Institutional Reform*

With Maren Woods, Praxis Program Manager  
and Carmen Hubbs, Archuleta County Victim Assistance Program

This project is supported by Grant #2015-TA-AX-K056 awarded by the Office on Violence Against Women, U.S. Department of Justice. The opinions, findings, conclusions and recommendations expressed here are those of the presenter(s) and do not necessarily reflect the views of the U.S. Department of Justice.

---

---

---

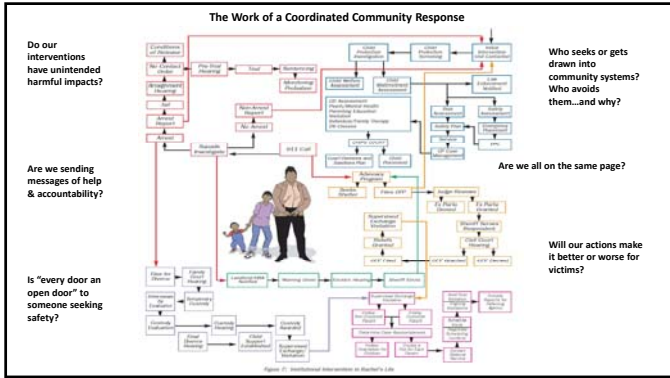
---

---

---

---

---




---

---

---

---

---

---

---

---

---

---

### Tools of Constructive Engagement for Institutional Reform: Institutional Analysis

Safety & Accountability Audit	Practice Assessment	Blueprint for Safety	Distinctive Applications
<ul style="list-style-type: none"> <li>Broad, open analysis and discovery regarding the criminal &amp; civil legal system's response to violence against women</li> </ul>	<ul style="list-style-type: none"> <li>Focused analysis on checklists of best practices</li> <li>Praxis guides:                             <ul style="list-style-type: none"> <li>911</li> <li>Patrol</li> <li>Investigations</li> <li>Charging</li> <li>Child protective services</li> </ul> </li> </ul>	<ul style="list-style-type: none"> <li>Comprehensive assessment of criminal legal system's response to battering that results in adoption of model policies</li> </ul>	<ul style="list-style-type: none"> <li>Broad, open analysis in settings such as foster care, human service organizations,</li> </ul>

---

---

---

---

---

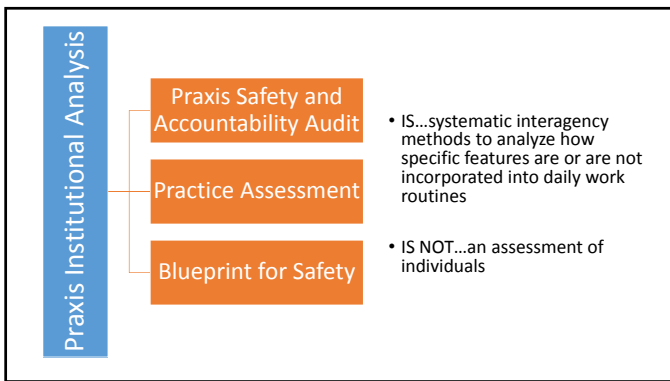
---

---

---

---

---




---

---

---

---

---

---

---

---

---

---

### Overview

With the goal of successful and effective implementation of institutional change, the tools follow these phases:




---

---

---

---

---

---

---

---

### Gather information through...




---

---

---

---

---

---

---

---

### Praxis tools look for:

- The **GAP** between what people experience and need and what institutions provide.
- The **GAP** from the victim's perspective.
- How the **GAP** is produced.

In order to close the gap and enhance outcomes.

---

---

---

---

---

---

---

---

### How are these and other gaps produced?

Institutions organize and coordinate workers to act in authorized ways:

- Case management
- Treat like cases alike
- Standardize workers' thinking and actions

10

---

---

---

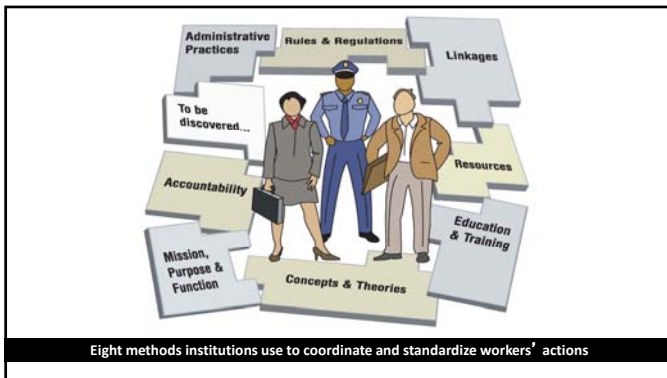
---

---

---

---

---



---

---

---

---

---

---

---

---

### Guiding Principles

Foundations

12

---

---

---

---

---

---

---

---

Increase access to protection and justice  
For those being harmed – safety and well-being for ALL



13

---

---

---

---

---

---

---

---

Increase accountability and opportunities to change  
For those causing harm



-oldmin

14

---

---

---

---

---

---

---

---

Start with real, everyday people

Immigrant battered women, Latinas, Deaf survivors of sexual assault, Battered women with disabilities, victims who are homeless/living in poverty, LGBTQ, etc.



15

---

---

---

---

---

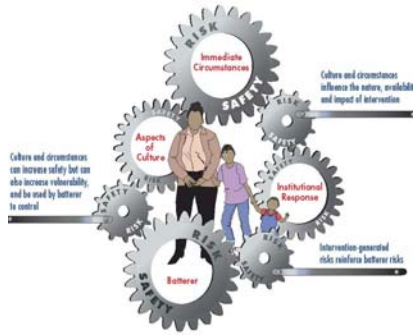
---

---

---

### Acknowledge and address intersecting social risks

Sexism, racism, classism, ableism, heterosexism, etc.



16

---

---

---

---

---

---

---

---

### We are looking for gaps

Safety, accountability, opportunities for help, meeting the real needs of survivors



17

---

---

---

---

---

---

---

---

### Reduce social harms caused by institutions

The cost of being battered, arrests of battered women for self-defensive violence, mass incarceration



Photo by Donna Ferrato  
Excerpted with permission from *Living with the Enemy*

18

---

---

---

---

---

---

---

---

# Archuleta County, Colorado

Carmen Hubbs, Executive Director  
Archuleta County Victim Assistance Program

---

---

---

---

---

---

---

---

- Archuleta County
- Population: 12,804
  - 8.9 persons per square mile
  - Tourist economy



Safety & Accountability  
Audit started in 2005

---

---

---

---

---

---

---

---

## Archuleta County's Safety & Accountability Audit Design

- Staying grounded in lived experience of victims
- Unique aspects about the Audit team
  - Assignments
  - Advocacy leadership

---

---

---

---

---

---

---

---

### Implementation of recommendations

- Impact on interagency collaboration efforts
- Immediate policy or practice changes
- Higher hanging fruit

---

---

---

---

---

---

---

---

### Longer term impact on collaboration efforts

- Focus of ongoing CCR work since the audit was completed
  - Process barriers
  - No finger pointing or blame
- Ongoing monitoring and evaluation
  - The Domestic Violence Packet
  - Increase in arrests of women
- Ongoing interagency commitment
  - Even with staff turnover
  - Communication

---

---

---

---

---

---

---

---

### OVW solicitations are now open!

**Supportive materials and resources**

- Sample grant language
- Guides, checklists, templates
- Focus group materials
- Impact and promotional material
- Training videos & webinar archives
- Individual support: Call us!  
651-699-8000, x10

**For**

- Safety & Accountability Audits
- Domestic Violence Best Practice Assessment
- Child Protective Services Practice Assessment
- Blueprint for Safety

---

---

---

---

---

---

---

---



**Upcoming training events**

- May 2-5, 2017 Community Assessment Institute, St. Paul
- Feb 7 webinar featuring the child protective services practice assessment process and impact
- Mar 7 webinar on how to use these tools to reduce unintended consequences and disparate impact

---

---

---

---

---

---

---

---



Now accepting applications through Feb 7, 2017

---

---

---

---

---

---

---

---

**Thank you!**

praxisinternational.org  
651-699-8000, x10  
safetyaudit@praxisinternational.org

---

---

---

---

---

---

---

---